

## SQ.line® easy to clean design

Comparison of reprocessing – SQ.line® vs. traditional design



### Key Facts at a glance:

Comparing cleaning steps of double action instruments, the **SQ.line® design** offers an **easy reprocessing** as follows:

- **Manual pre-cleaning** steps can be **eliminated** with fully machine-cleanable instruments
- Resulting in **time savings up to 12 minutes** in handling time

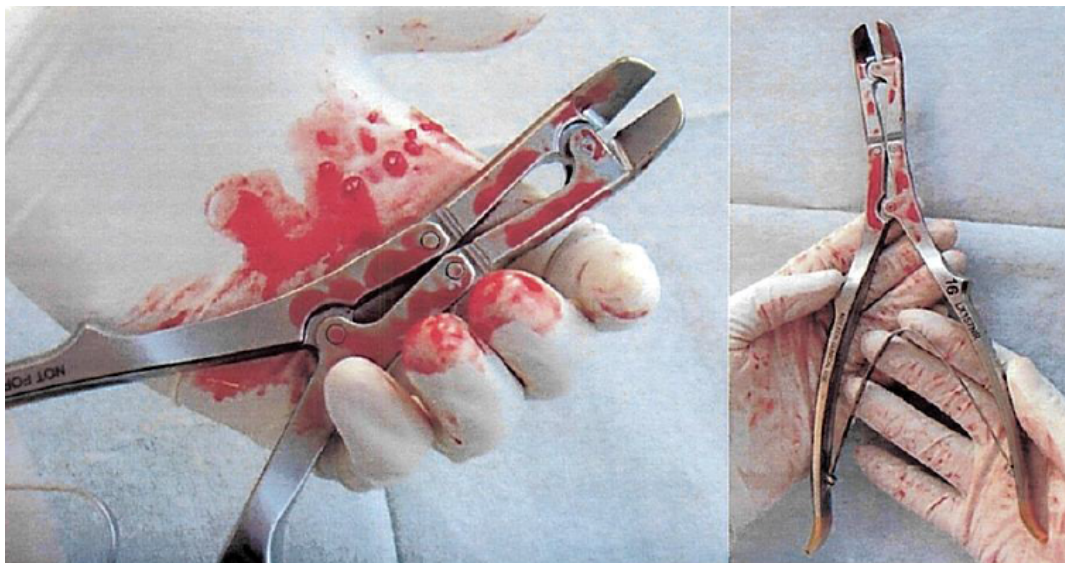


## Executive Summary - Test performance:

Test object:  
LX157NR


Test performance:

- Standard contamination with test soil based on sheep blood, containing radioactive marker



- Cleaning was performed according to "Aesculap® Validated Reprocessing Procedures AVA-V6"
- 3 runs were conducted

| Cleaning Step       | Description  |
|---------------------|--|
| Manual pre-cleaning | A manual pre-cleaning was not performed  |
| Automated cleaning  | The following program was used for automated cleaning: <ul style="list-style-type: none"><li>• 3 min pre-cleaning with cold tap water</li><li>• Draining</li><li>• 10 min cleaning with 55°C deionized water and 0.5% of Helimatic Cleaner alkaline (B. Braun)</li><li>• Draining</li><li>• 1 min rinsing with cold deionized water</li><li>• Draining</li></ul> |
| Washer-disinfector  | Miele Professional G 7836 CD<br>SN:9230557   |
| Rack                | Two-level rack (Miele) E327  |

|   |  |
|---|--|
| <p>Arrangement of samples in washer-disinfector</p> |  |
| <p>Additional load</p>                              | <p>Two metal sieve baskets with Crile clamps were used as additional load</p>      |

- After the cleaning process, the instruments were analyzed for
  1. Visible residues
  2. Detection of invisible residues (protein, hemoglobin and radioactivity)

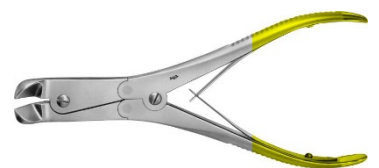
**Test result:**

Successful cleaning validation of the complete instrument without manual pre-cleaning!

**Additional Information**

**Leaf Spring**

Compared to traditional double action instruments the spring does not need to be opened for cleaning. The opening of the spring often leads to corrosion and spring fracture. Therefore, the SQ.line® double action instruments were designed with a new kind of spring which enables reprocessing without opening the spring - even without manual pre-cleaning!



## Manual pre-cleaning - Calculation of time savings

|  | Min.                                  | Max.                                  |
|--|---------------------------------------|---------------------------------------|
| Qty. double action instrument per tray                         | 1 pc.                                 | 3 pcs.                                |
| Time for ultra sonic*<br>(Results of interviews with 31 CSSDs) | 3.17 minutes<br>(Deviation 1-10 min.) | 4.55 minutes<br>(Deviation 1-10 min.) |
| Time for manual pre-cleaning*                                  | 1.12 minutes<br>(Deviation 1-5 min.)  | 2.5 minutes<br>(Deviation 1-5 min.)   |
| <b>Result</b>  | <b>4.29 minutes</b>                   | <b>12.05 Minutes</b>                  |

\* Results of interviews with 31 CSSDs

AESCULAP® – a B. Braun brand

Aesculap AG | Am Aesculap-Platz | 78532 Tuttlingen | Germany

Phone +49 7461 95-0 | Fax +49 7461 95-26 00 | [www.aesculap.com](http://www.aesculap.com)

The main product trademark 'Aesculap' and the product trademark 'SQ.line' are registered trademarks of Aesculap AG. Subject to technical changes. All rights reserved. This datasheet may only be used for the exclusive purpose of obtaining information about our products. Reproduction in any form partial or otherwise is not permitted.

D-XX19051 0520/PDF/1